



VSP Virtual Serial Port management software **Manual**

Date: 2014/05/20 Version 2.1.1

shenzhen 3onedata Technology Co., Ltd
<http://www.3onedata.com.cn>

Statement

Copyright statement:

For this manual, all rights reserved by 3onedata Technology Co., Ltd. No company or individual is allowed to duplicate or translate this manual in any forms without written permission issued by 3onedata Technology Co., Ltd.

Trademark statement:

**3onedata**[®]

and is the registered trademark owned by Shenzhen 3onedata Technology Co., Ltd. And other trademarks mentioned in this manual belong to their corresponding companies

Conventions Used in the Manual

Technical or printing errors might exist in the product or the instruction manual; therefore, Shenzhen 3onedata Technology Co., Ltd. reserves the right to change the manual entirely or partially with no advance notice required. Due to the improvement of the management software, the version of software that you are using might not be the latest or the perfect version. The manual is only for your reference, and please contact us if you have any questions.

Revision Histories

Version NO.	data	Cause
V1.0.0	2011.01	Document creation
V1.1.0	2011.06	Software upgrade
V1.1.1	2011.07	Modify document
V2.1.1	2014.05	Software upgrade

Attentions:

Please read through the following conventions before reading the manual:



: Necessary explain information.



: Specify things need to pay more attention.

CONTENTS

1 PREPARATIVE.....	3
2 INSTALLATION.....	4
3 SOFTWARE INTEFACE.....	9
4 DEVICE MANAGEMENT.....	10
5 VSP MANAGEMENT.....	13
6、MONITOR MANAGEMENT.....	15
7、SYSTEM SETTINGS.....	15

1 Preparative

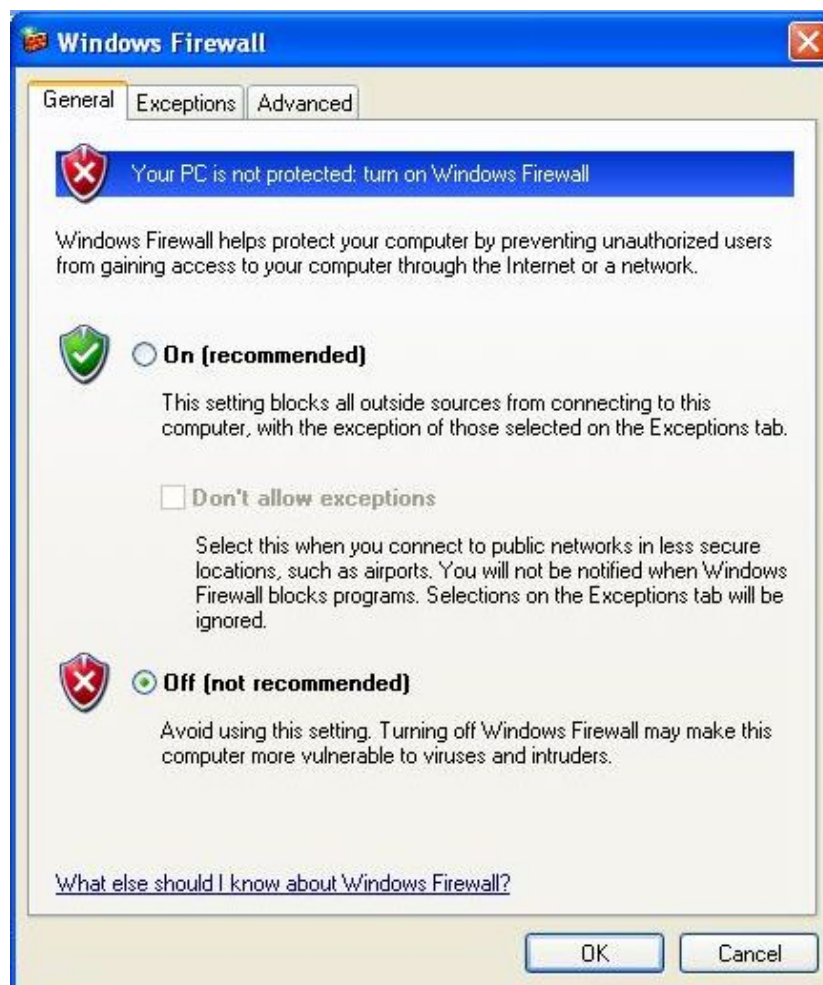
Installation the VSP software into a PC, then connect NP301 into a network. Then set your device according to your using requirement.

- (1) The software supports Microsoft Windows 2000, XP, 2003, Vista, Server 2008, Win7, Win8 operation system
- (2) Default IP address is 192.168.1.X network segment, before install Link Wizard, please close the fireware and exit antivirus software for a while.

Especial attention: Windows XP operation system, please close firewall at first!

Close XP operation system firewall:

Start → Control Panel → Security center → windows firewall, enter in windows firewall interface, choice "off", click "OK"



(Figure1.1)

The software version: V2.2.0

The software can just use together with serial device and the hardware version must 1.2 or up to 1.2.

Device Name:	NPM301
Device Description:	Serial Server Machine
Hardware Version: 4.0.0	Firmware Version: 1.4.0 bu

(Figure 1.2)

2 Installation

Install program, Figure 2.0,

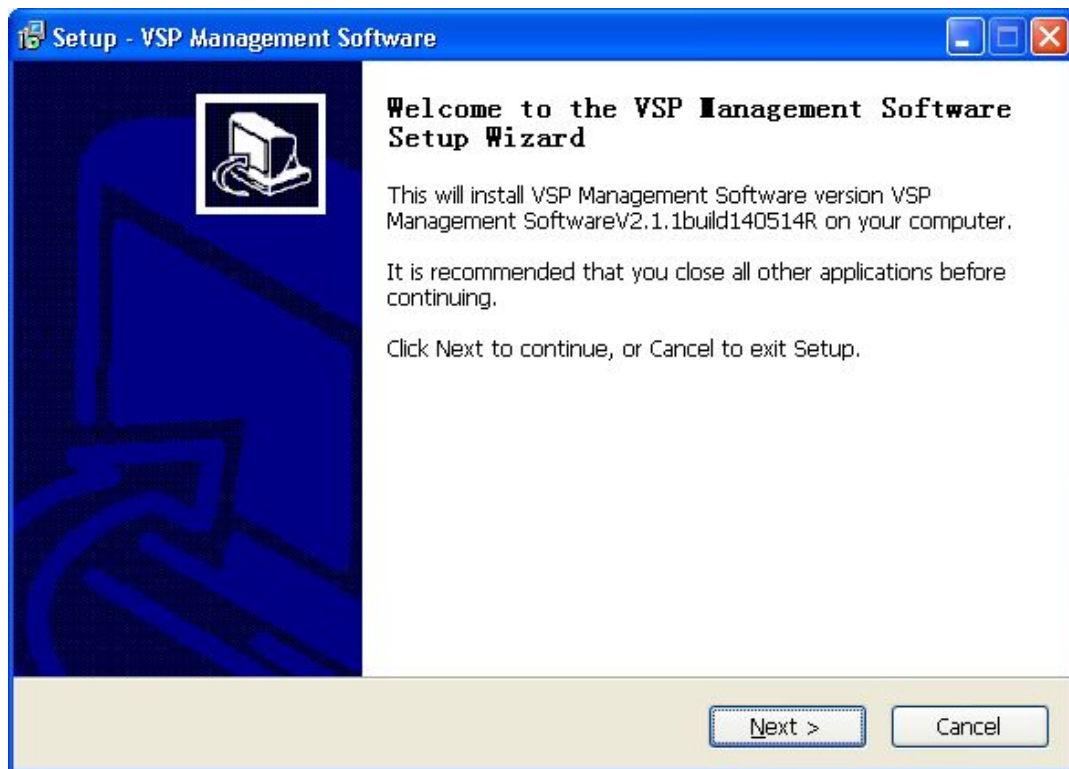


(Figure 2.0)

Installation procedures:

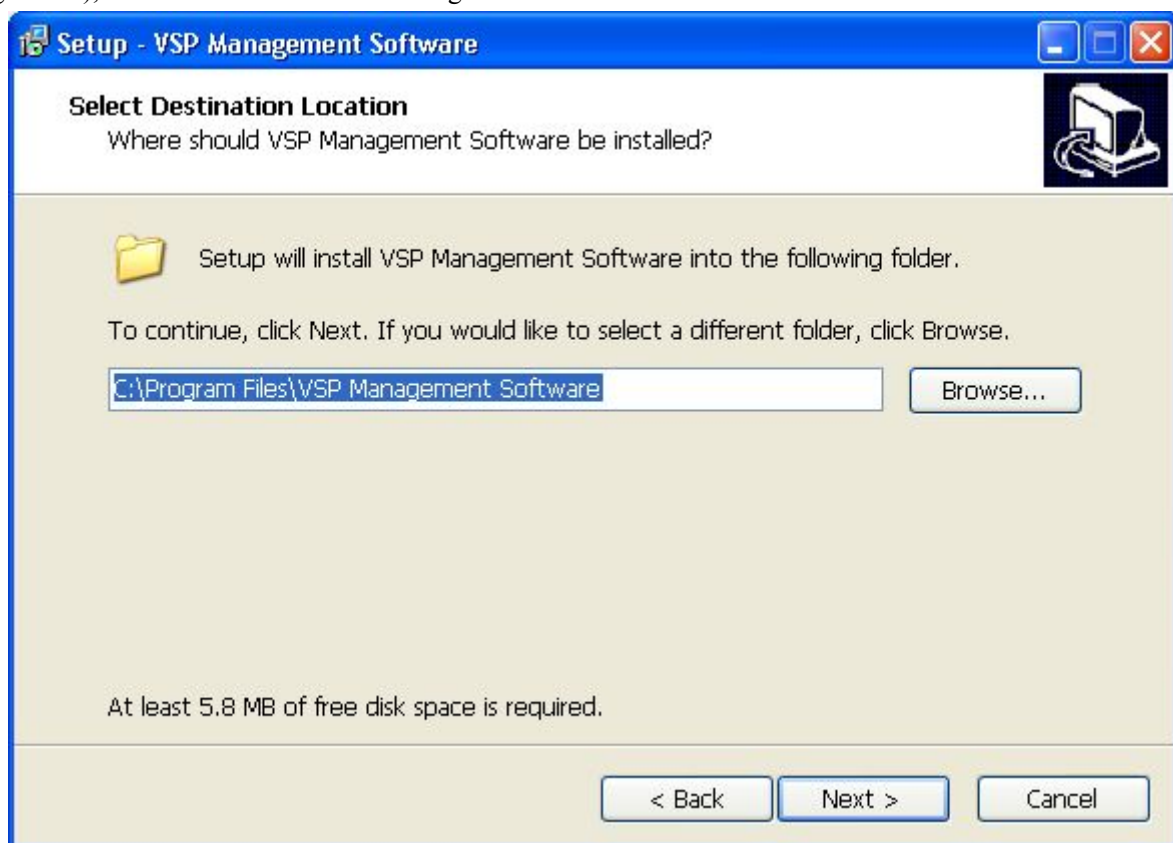
1. Run the software as (figure 2.0), enter in the installation interface as (figure 2.1.1), start to install





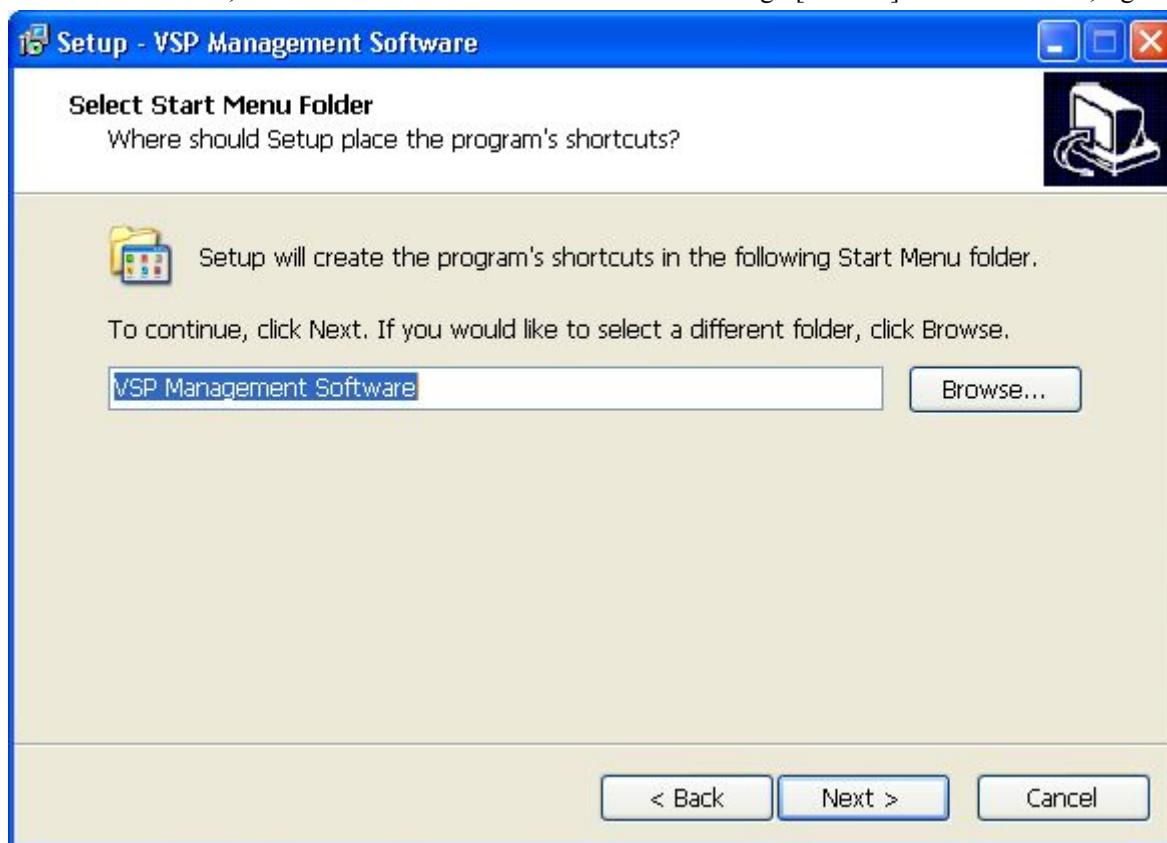
(Figure 2.1.1)

2. Click “**Cancel**”, can stop installation procedures, click “**next**”, enter into the display interface as (figure 2.2), Choice installation route through “**Browse**” .



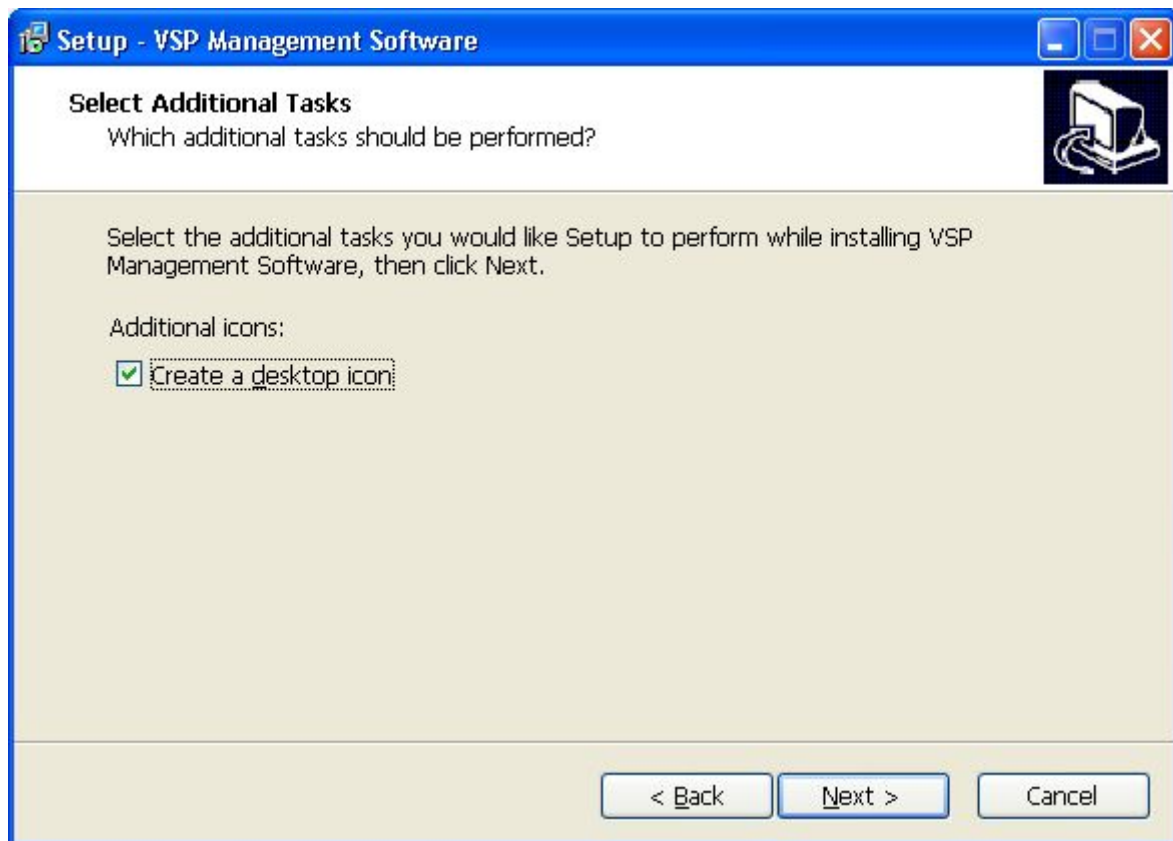
(Figure2.2)

3. Click “Next”, can choice the file that have the shortcut through [Browse] after installation, figure 2.3



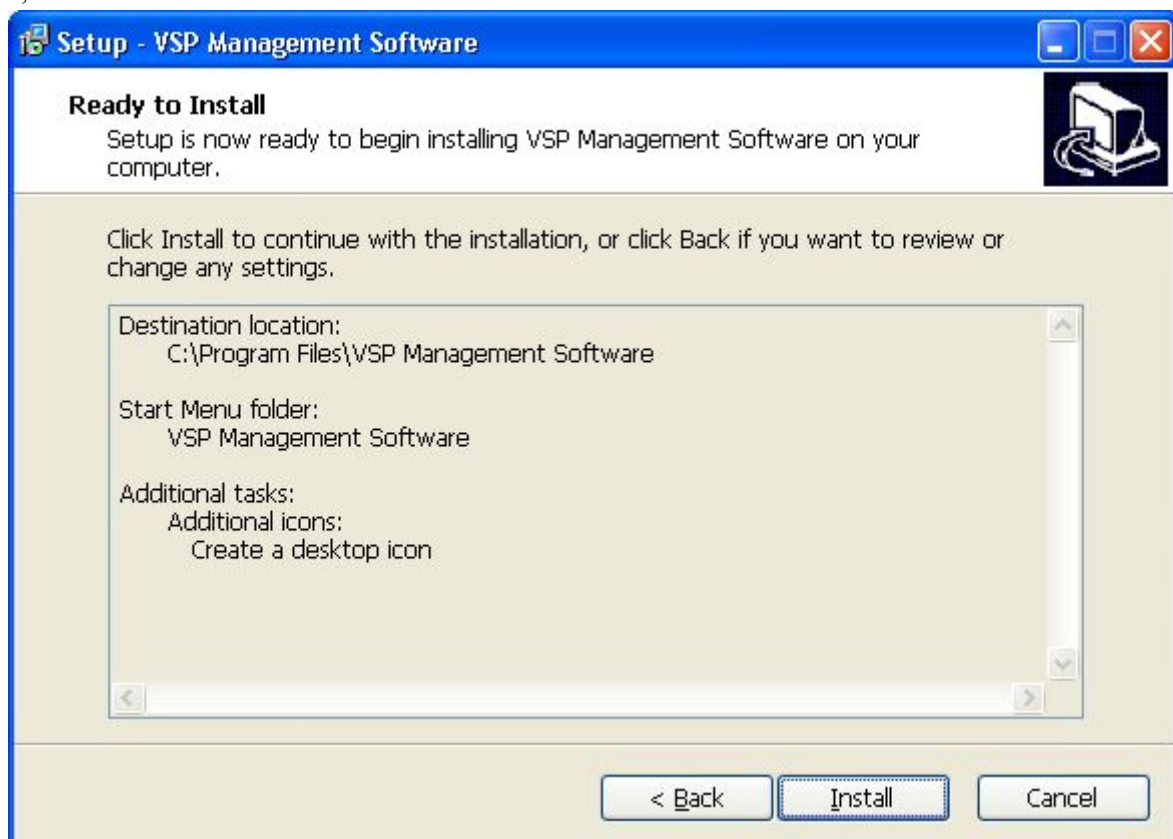
(Figure 2.3)

4. Click next, can choice “Create a desktop icon” as figure 2.4.1, (If making tick, The desktop will have a shortcut Icon as figure 2.4.2) ,



(Figure2.4.1)

5. Click next, If you making tick " create a desktop icon" , enter into the installation interface as figure 2.5.1,



(Figure2.5.1)

6、Click “install” , There will hae a DOS black screen as figure 2.6.1, it shows the installation procedure is intalling the driver, please do not close it, let it close by itselfes.

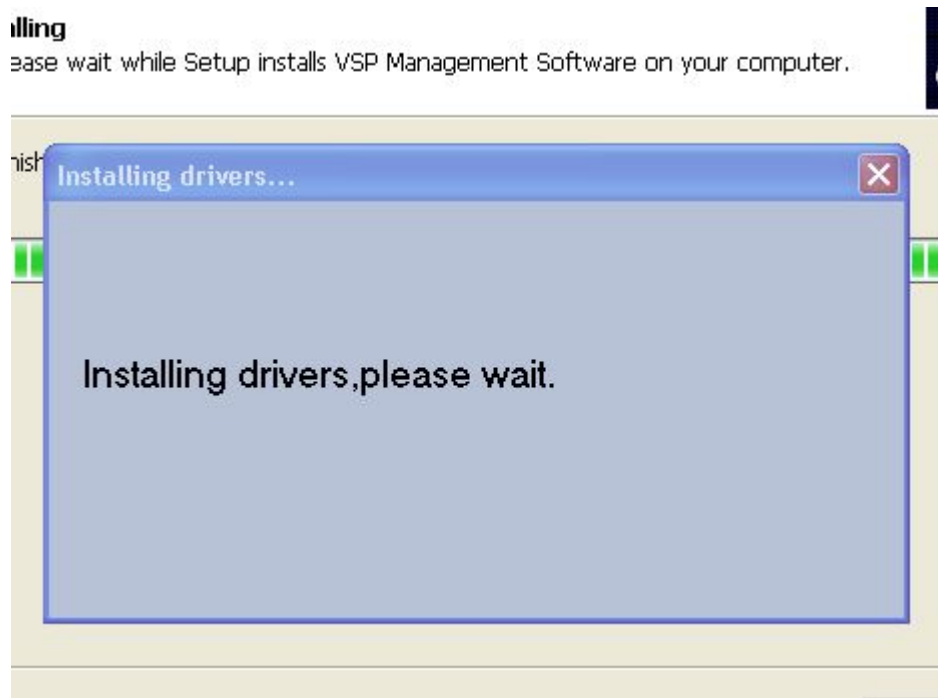
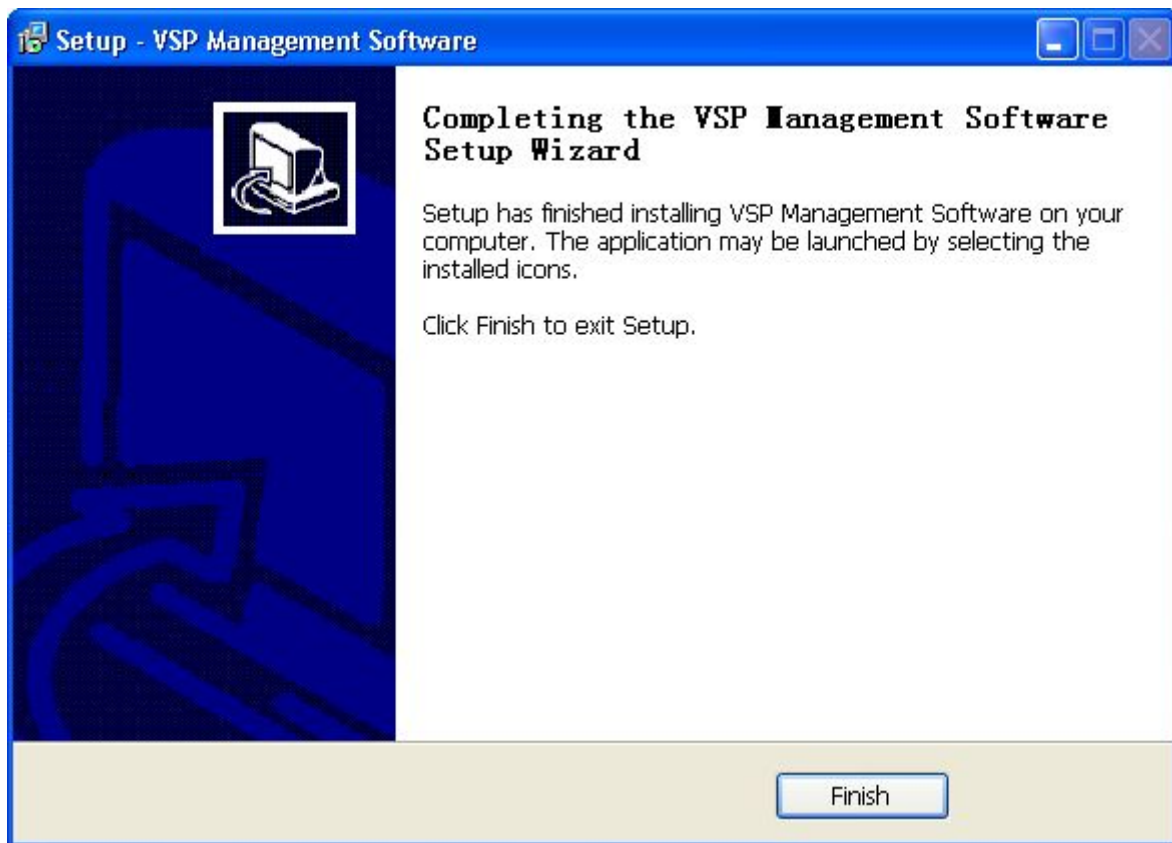


Figure 2.6.1

7. Click “Finish” figure 2.7.1. Please check the floder under the installation route have “ VSP Management Software” or not, if you make tick on” Create a desktop icon”, you will see a Icon on the desktop as figure 2.7.2.



(Figure 2.7.1)

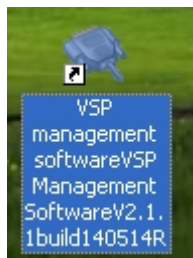
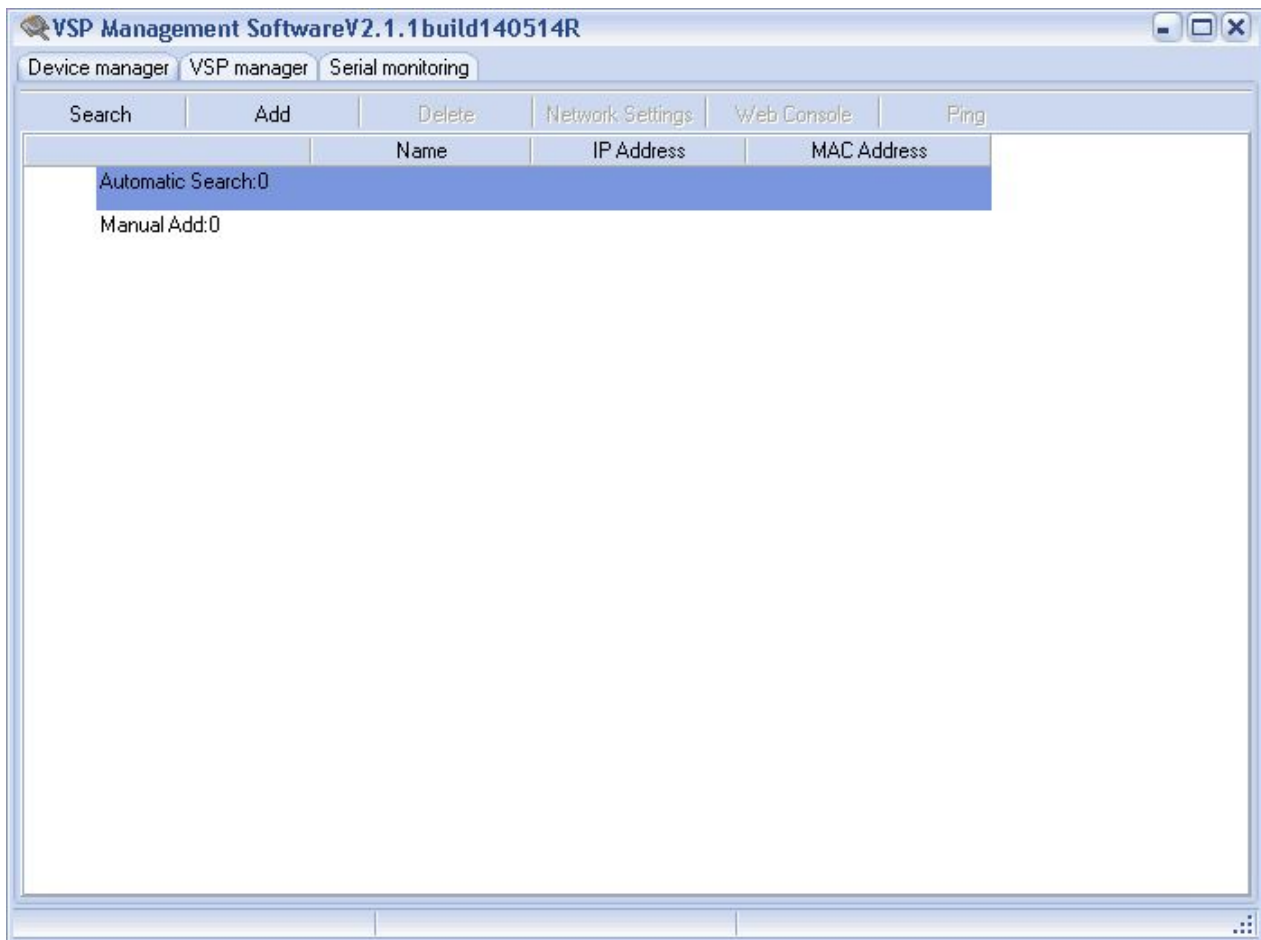


Figure 2.7.2

3 Software interface

Finished install the software, Double click figure 2.7.2, enter into the device manager interface as figure3.1.



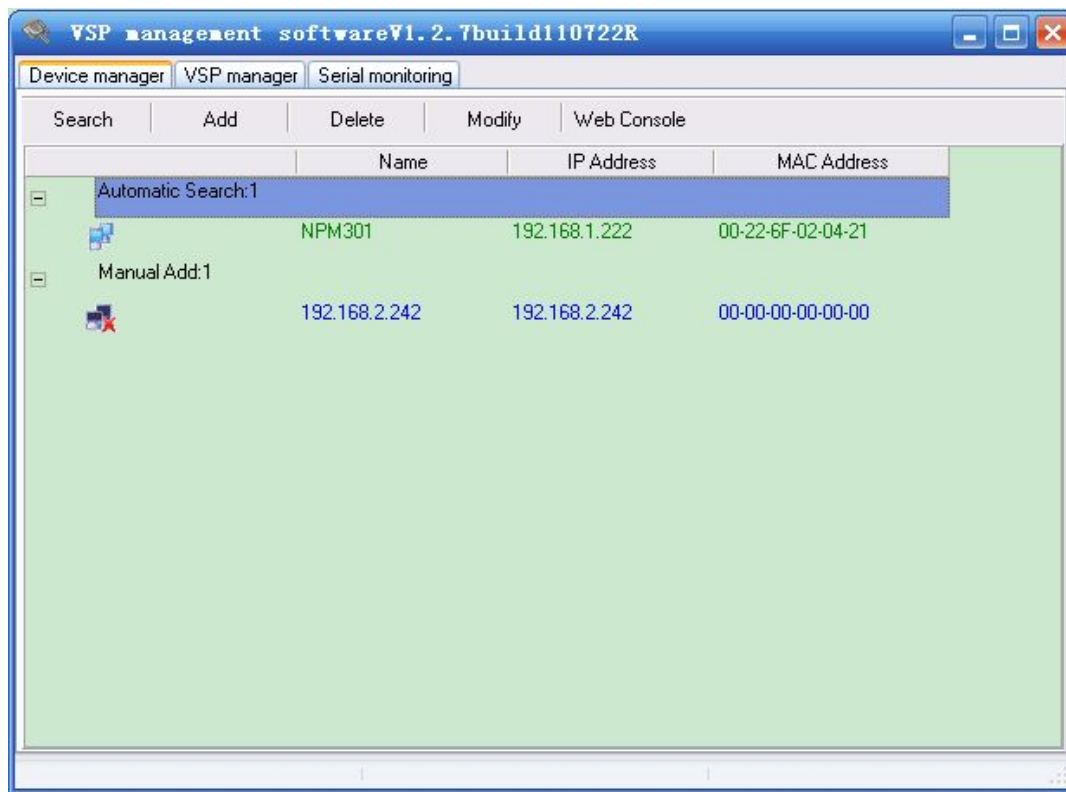
(Figure 3.1)

4 Device management

Main function:

1. Search device

Searching device in the same or different network segment, same network segment uses UDP broadcast, different network segment uses UDP unicast.



(Figure 4.1)

Automatic search can just search device in the same network segment, if you want to search different network segment, please use manual search.



:



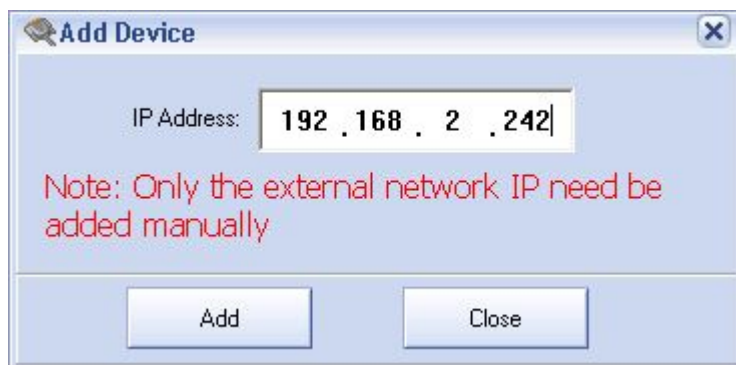
means have searched the device



means did not search the device

2. Add device

Just add the device in different network device.



(Figure 4.2)

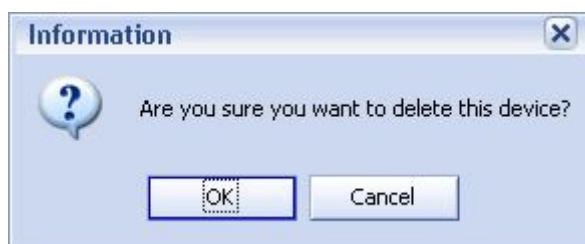
Input the correct IP address of the searching device, click "add", then you can search the device.



The specify search must know the IP address, if you do not know the IP address, please connect the device into the same network segment, click search, you can find the IP address.

3. Delete device

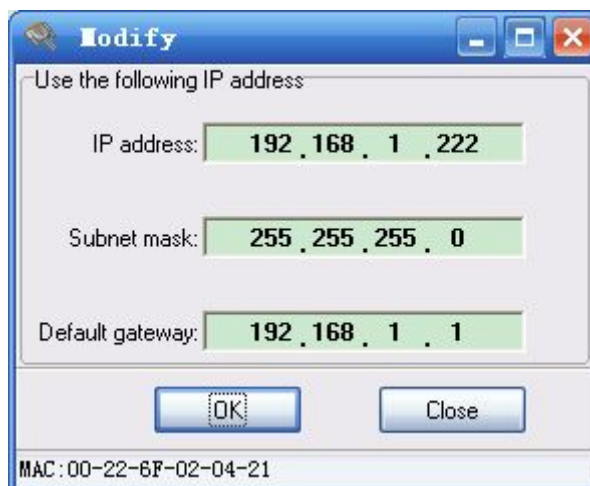
Delete automatic search and manually add device as (figure 4.3).



(Figure 4.3)

4. Modify IP address

Modify IP address, can just modify the IP address that have already searched device.



(Figure 4.4)

5. Configuration interface

Open the WEB configuration interface with the default browser, can just use in the device that already searched. Click “configuration interface” Enter into WEB managed directly, default user name and password is admin as (Figure 4.5).



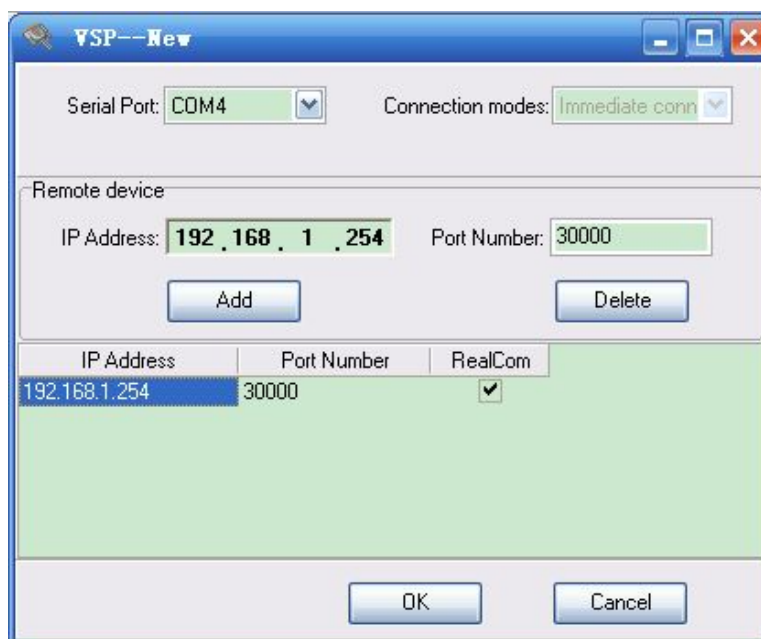
(Figure 4.5)

5 VSP management

Main operation:

1. New

Make a new VSP and configure remote device IP address and port number, click "add", then make a tick under RealCom. The port number must be the same as TCP server configured through WEB as figure 5.2. The default connection model is TCP Client as figure 5.1. Connection mode is "immediately connection" means. If the once VSP is created, try to connect remote device make a TCP connect. If the connection cut unconventionally, Progame will re-connect immediately, until connect successful.

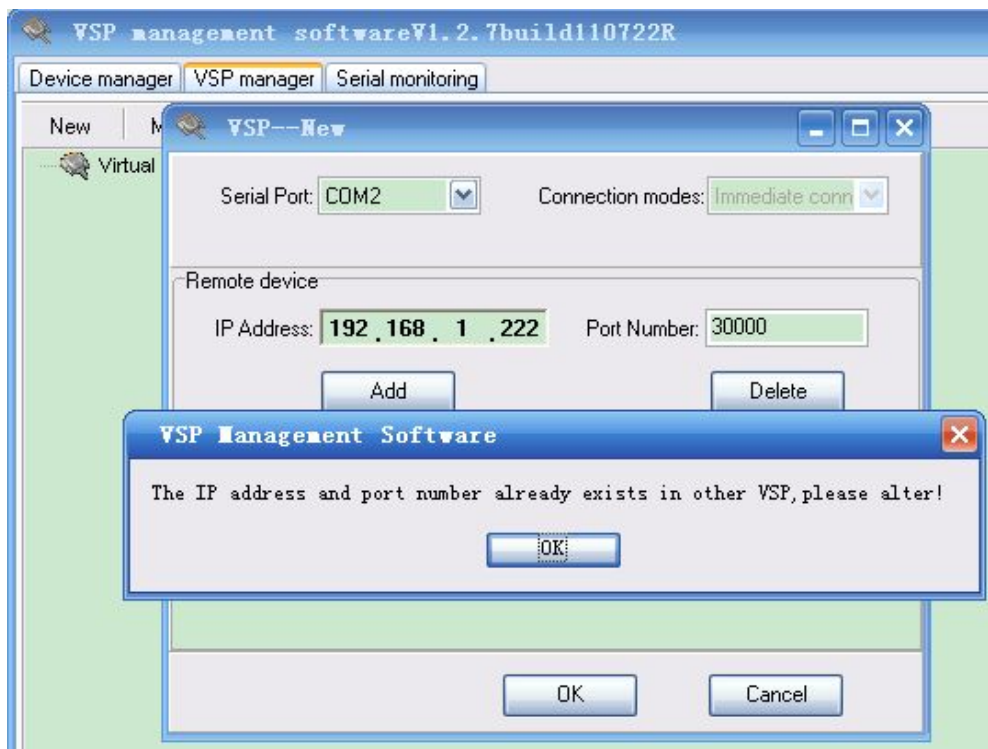


(Figure 5.1)

Work Mode Settings								
Sessions	Mode	Local Port (1~65535)	Destination Address	Destination Port (1~65535)	Connection Mode	Keep-alive (1~65535)s	RealCom	
<input checked="" type="checkbox"/>	TCP Serv	30000	IP 192.168.2.3	31000	Immediate	300	Open	
<input type="checkbox"/>	TCP Serv	30001	IP	31001	Immediate	300	Open	

(Figure 5.2)

Because connection cut, system can re-connect remote device, system does not allow the different remote device with same IP address and port number. If you add a IP address and port that existed in other VSP, will show as figure 5.3.



(Figure 5.3)

2. Modify

The function of Modify is the same as New, just can not modify serial port number.

3. Delete

Delete one VSP, normally can not the delete existed VSP that have already open.

(When the program unconventionality, application have already closed, but the VSP still prompt serial port opened can not delete, you can press "Shift" key and click "delete", then it can delete the serial port)

4. Checking

Check the configuration of VSP. When the VSP opened, can not modify, just check.

5. Delete all

Just use for all VSP did not open

6、Monitor management

1. Monitor configuration

Configure the serial port number that needs to be monitored, the mode is used HEX or ASCII display send and receive data.

2. Startup and forbid monitor

Process once the monitor configuration is successful.

3. Empty all records

Empty the monitor information, parameter change, receive and send data. Statistics do not reset.

4. Statistics send and receive data

Process will calculate send and receive data byte automatically when the monitor starts up.

5. Stop and continue display

Process just calculates send and receive data, do not display parameter change and send and receive information.

6. Save the monitor information

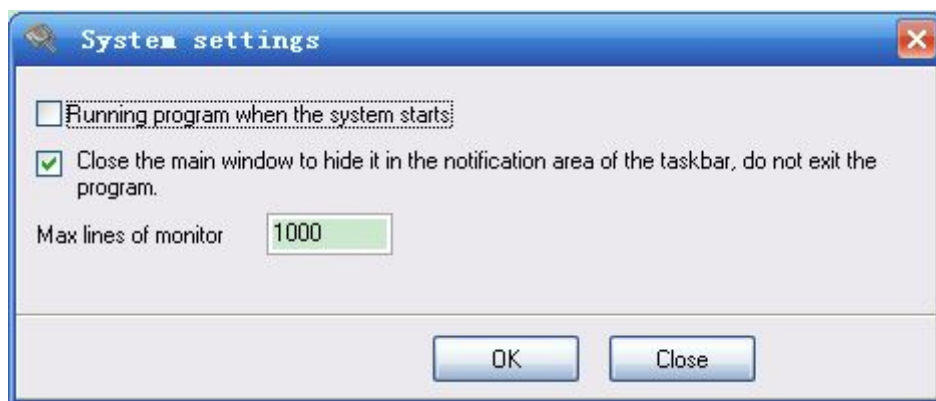
Click right key on the monitor interface, can save the information as single or all.



Monitor function is used for debugging, it will affect the process ability and engross a part of memory, it is better to stop monitor.

7、System settings

Click right key of the icon on the taskbar, select “System setting”, can select “Running program when the system starts” or “Close the main window to hide it in the notification area of the taskbar, do not exit the program”.



(Figure 7.1)